



1217

1218

1219

1220

0
5
10
15
CENTIMETERS

UNION OIL CO.
WELL: Q-1/A-1
HELM FIELD
DUTCH SECTOR
NORTH SEA





UNION OIL CO.
WELL: Q-1/A-1
HELM FIELD
DUTCH SECTOR
NORTH SEA

1228

1229

1229.0
TO
1235.18
FROZEN
AND
PRESERVED
SAMPLES



UNION OIL CO.
WELL: Q-1/A-1
HELM FIELD
DUTCH SECTOR
NORTH SEA

1236

1237

1238





1239

1240

1241

1242

0 5 10 15
CENTIMETERS

UNION OIL CO.
WELL: Q-1/A-1
HELM FIELD
DUTCH SECTOR
NORTH SEA

1244.67
TO
1245.0
MISSING



1243



0 5 10 15
CENTIMETERS



1245

1245

UNION OIL CO.
WELL: Q-1/A-1
HELM FIELD
DUTCH SECTOR
NORTH SEA



1245.87
TO
1246.10
NOT
RECOVERED



UNION OIL CO.
WELL: Q-1/A-1
HELM FIELD
DUTCH SECTOR
NORTH SEA



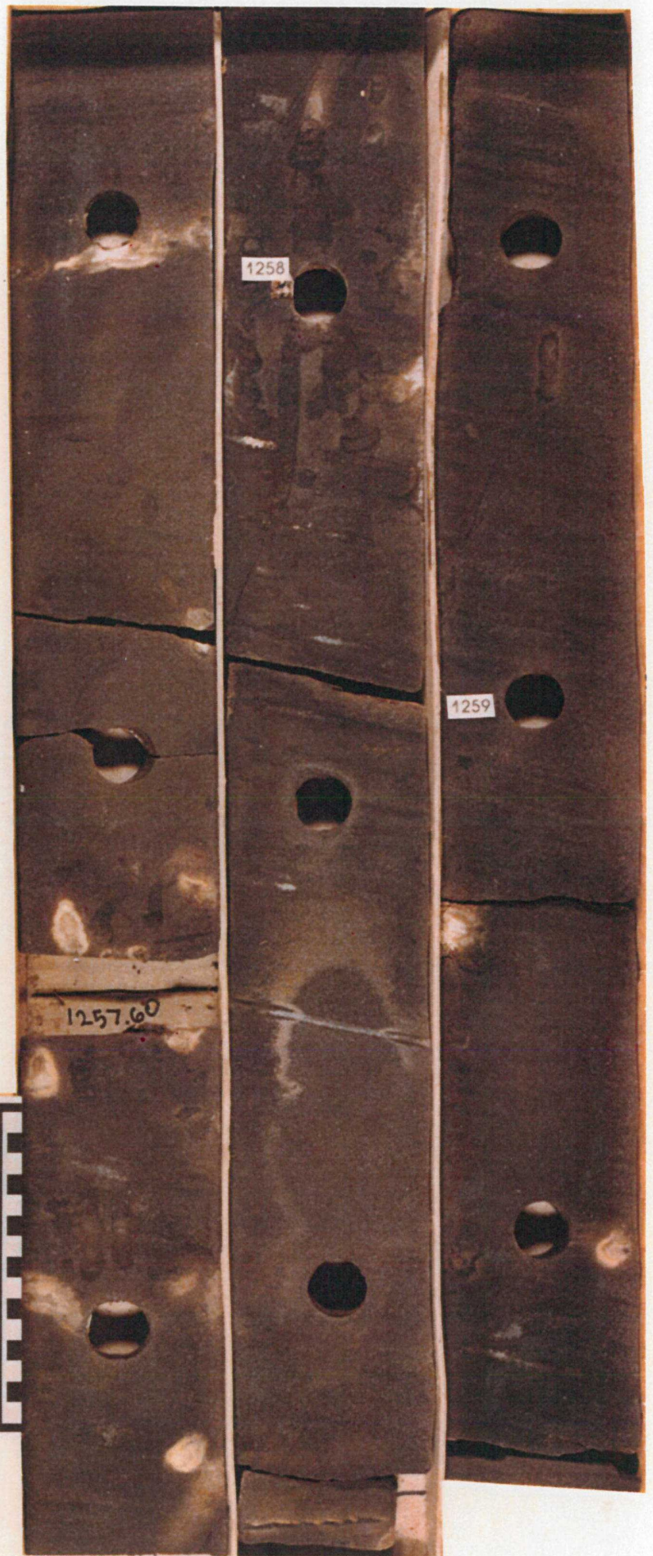
1247



1248

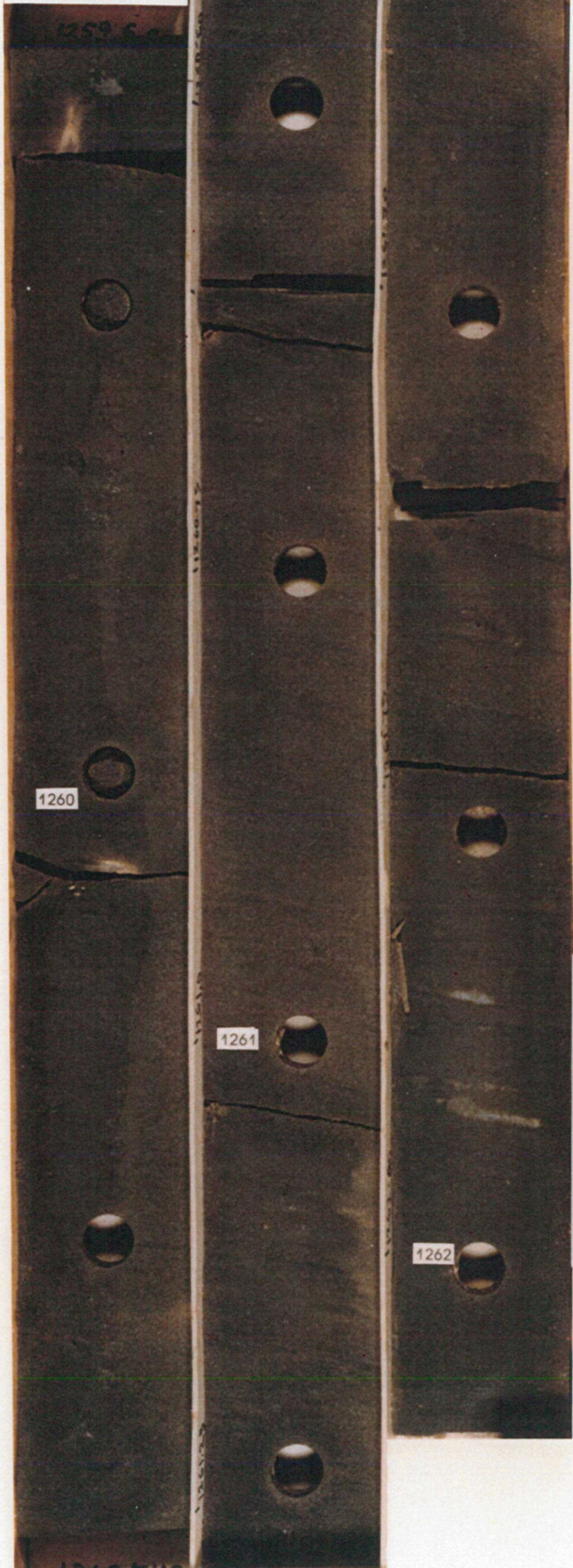


1249



0 5 10 15
CENTIMETERS

1259.35
TO
1259.60
PRODUCTION
TESTS



1260

1261

1262

1262.10



1263

1262.35
TO
1262.60
PRODUCTION
TESTS

1262.60

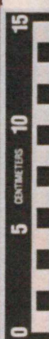
1262.83

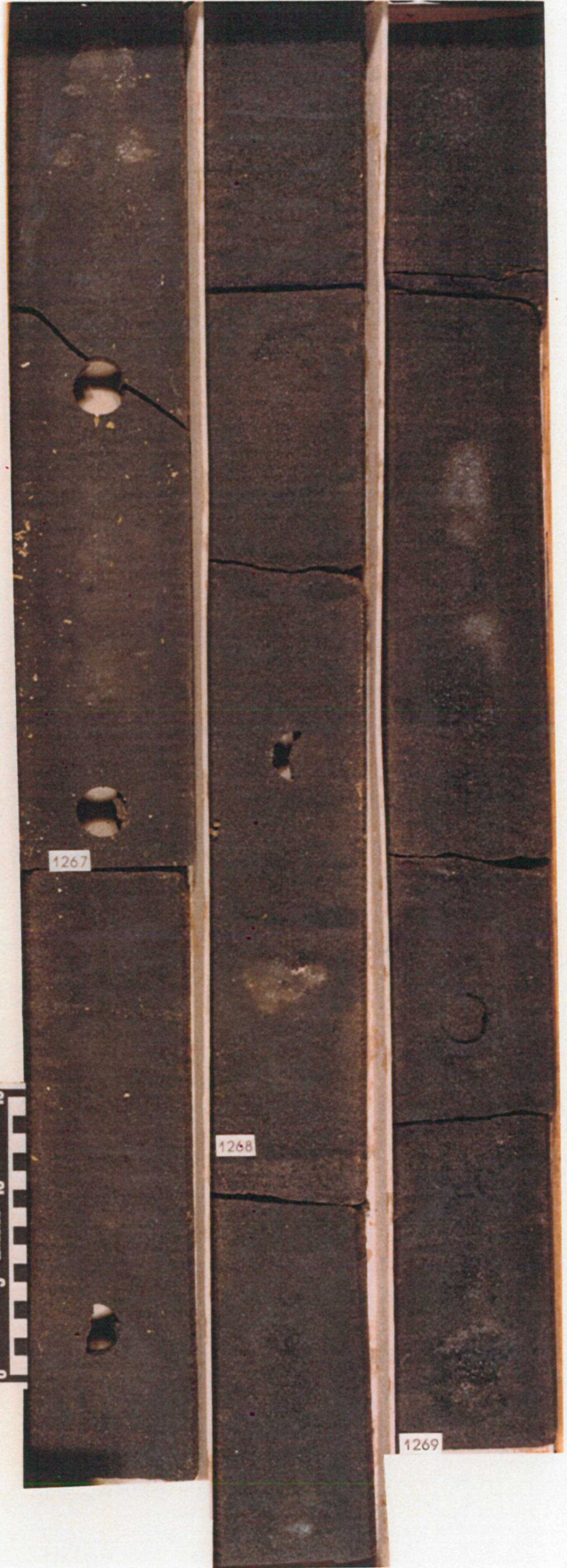
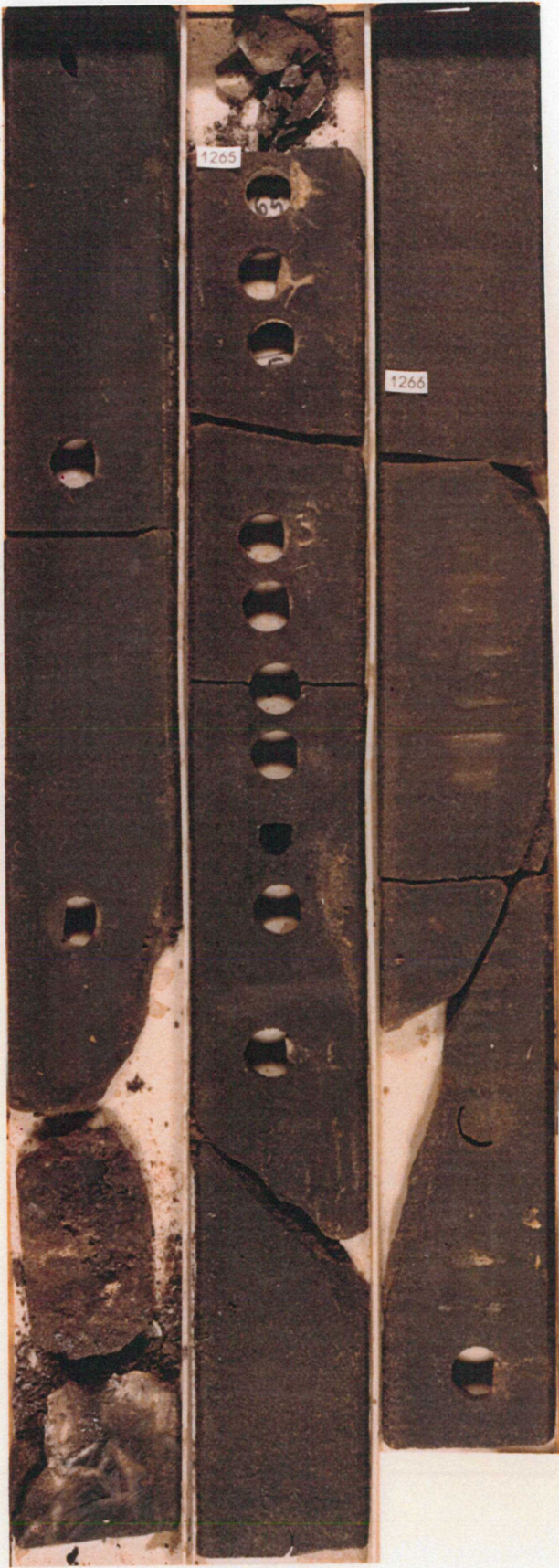
1263.95

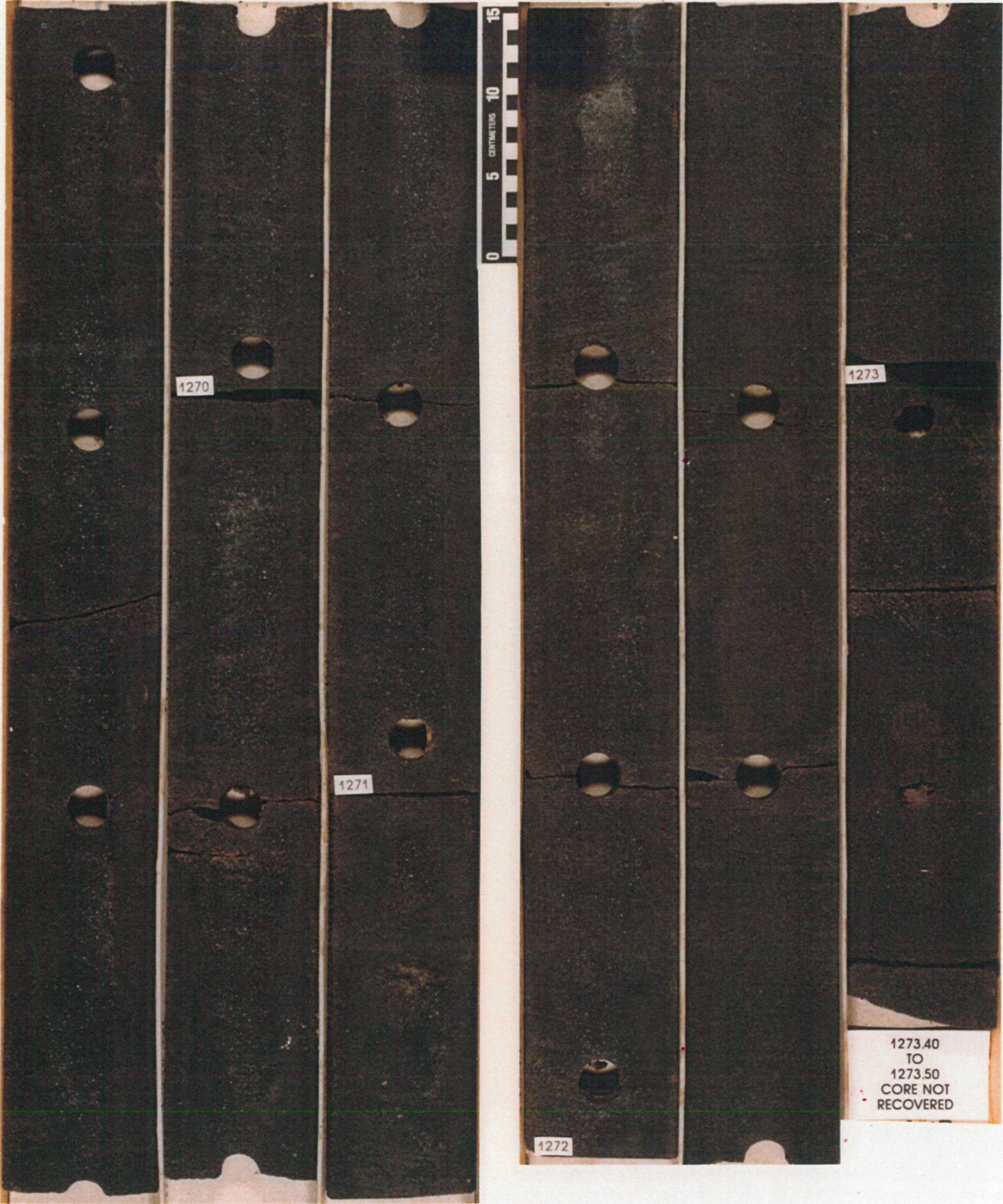
1263.95
TO
1264.15
CORE BADLY
BROKEN

1264.15

1264.30







1270

1271

1272

1273

1273.40
TO
1273.50
CORE NOT
RECOVERED

0 5 10 15
CENTIMETERS



1274



1275



1276



1277



1278



1279

1280

1281

1282

1283

1284

1282.80
TO
1283.0
CORE NOT
RECOVERED

1283.0

1283

1284

1285

1285.28

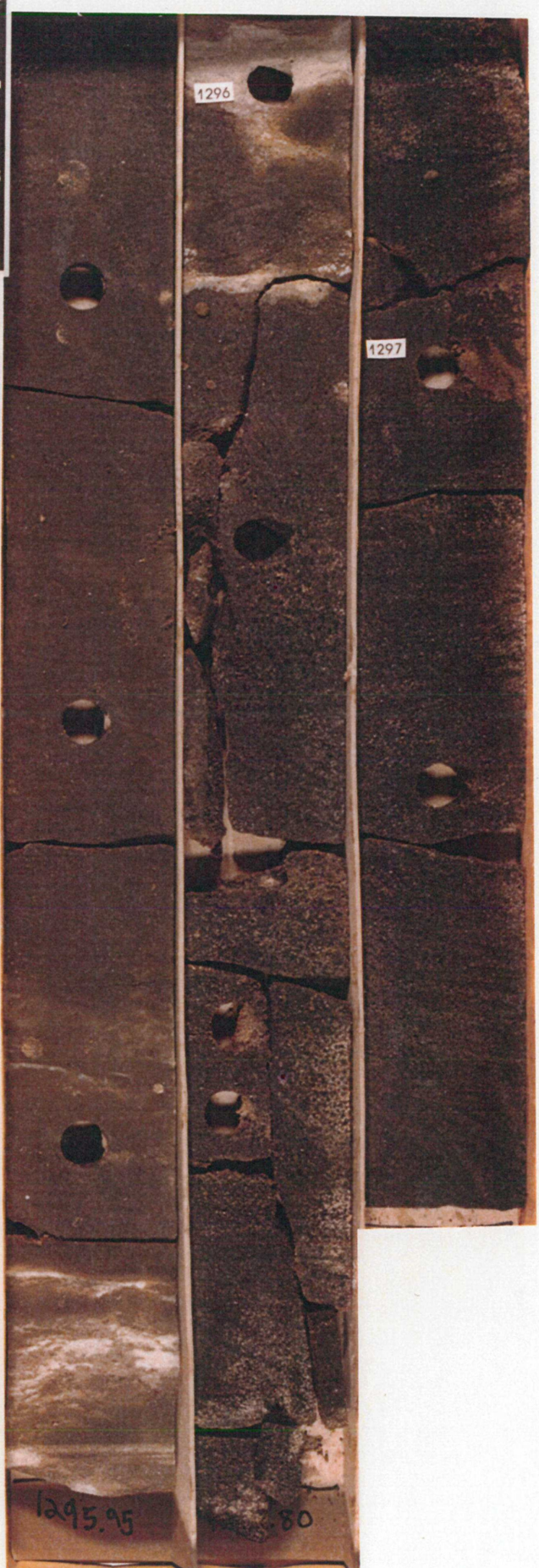
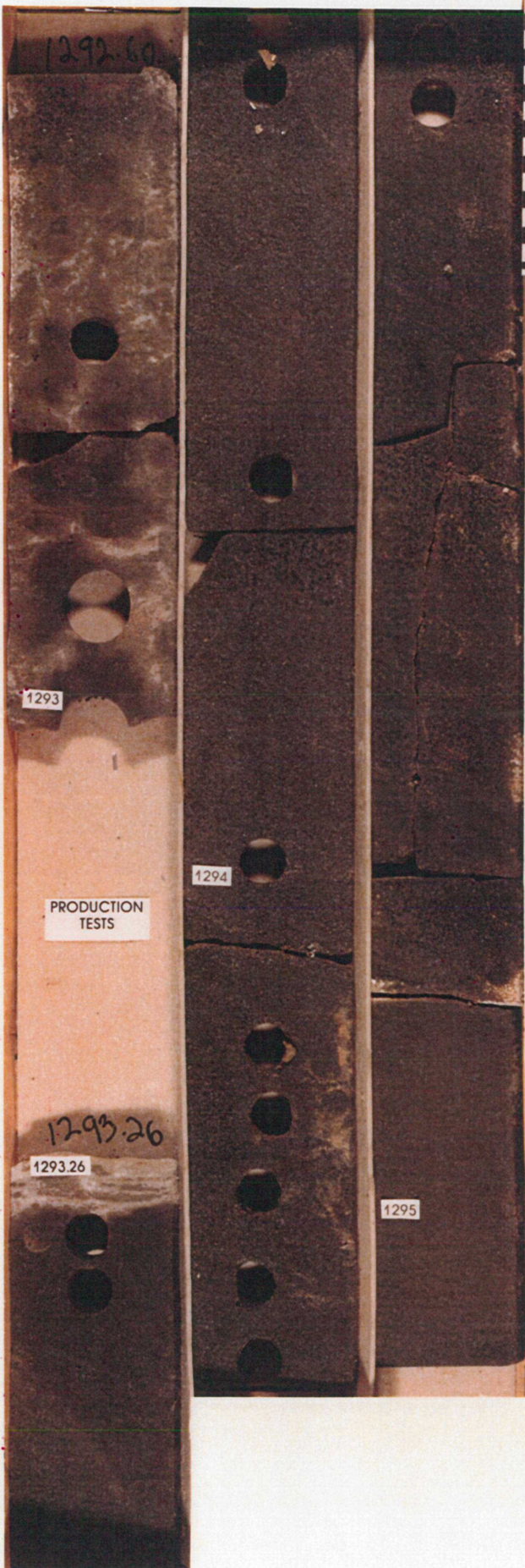


1285.28

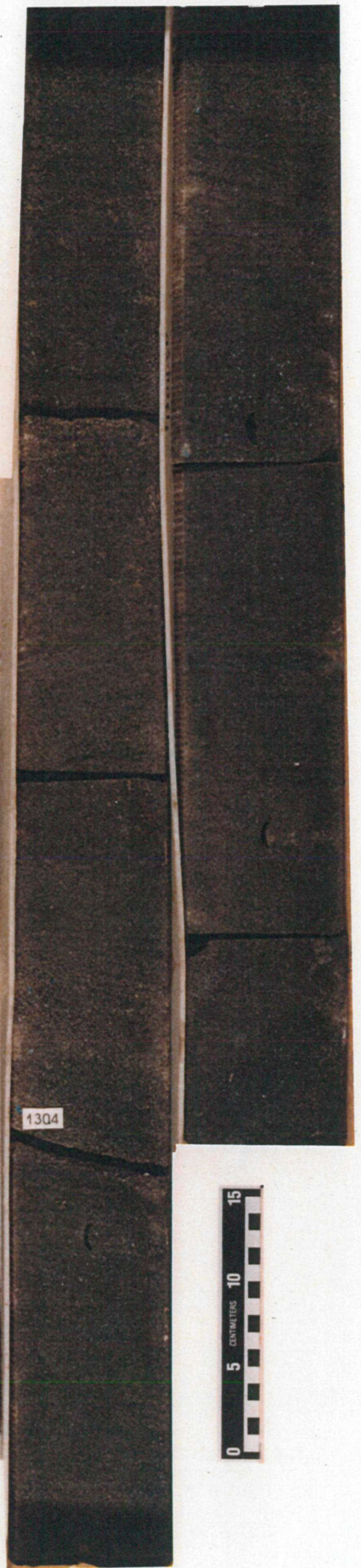
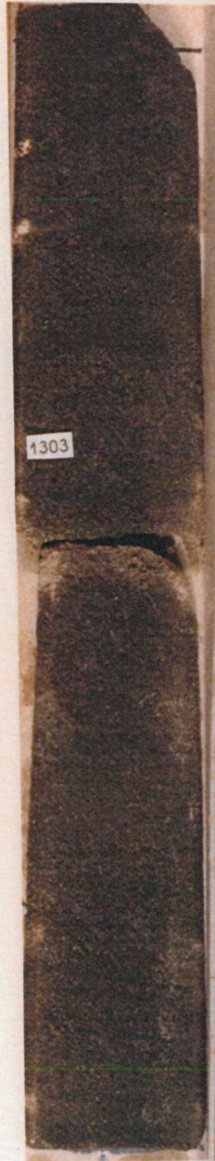
1286











1305

1306

1307

1308

1309

1310



13075

1708.37

