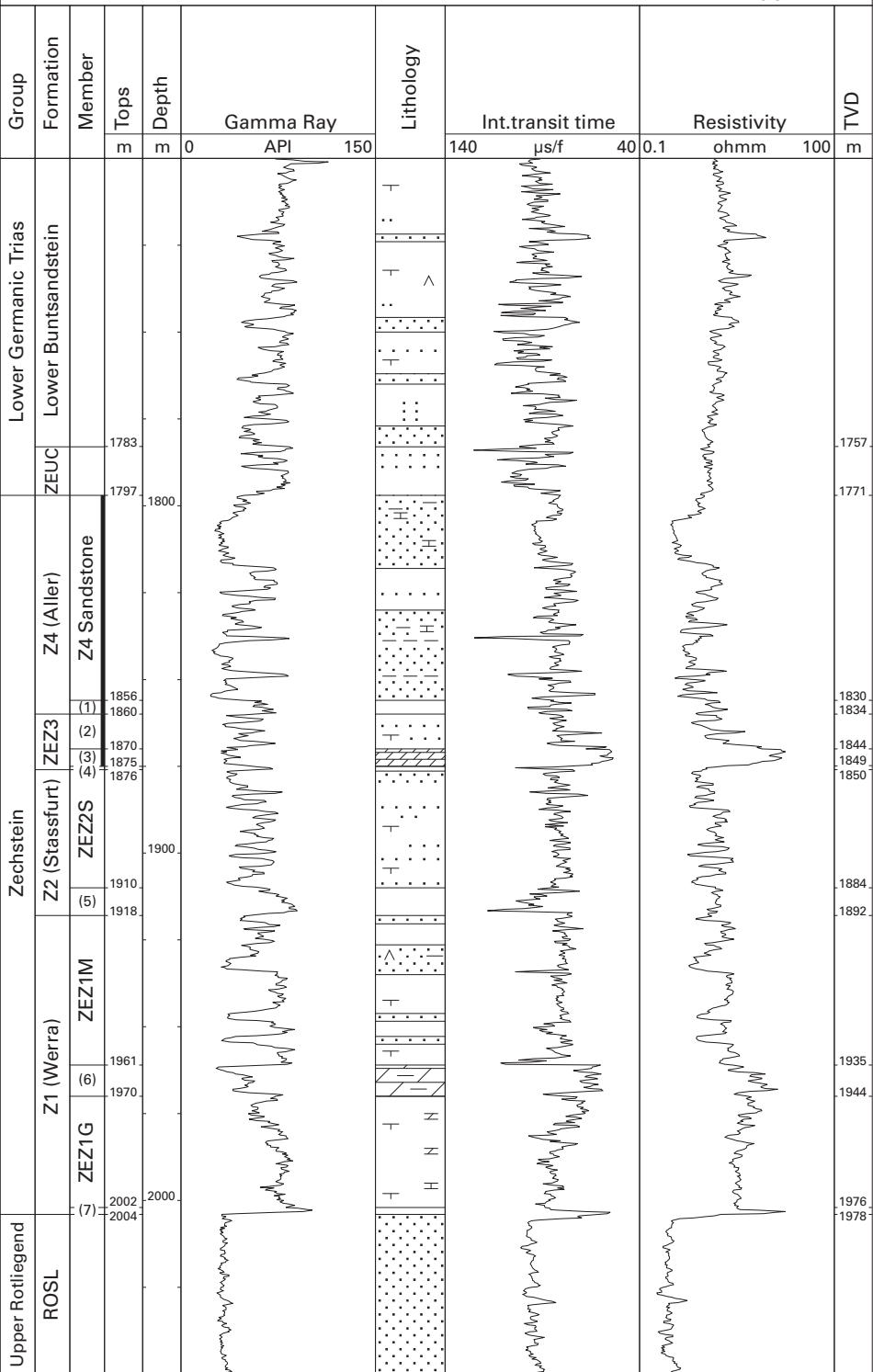


P07-01 (UNION)

52°32'43.90" N
03°11'40.60" E
RT 25.91 m



ZEZ3 Z3 (Leine) Fm.
 ZEUC Zechstein Upper Claystone Fm.
 ROSL Slochteren Sandstone Fm.
 (1) Red Salt Clay Mb.
 (2) Z3 Fringe Claystone Mb.
 (3) Z3 Carbonate Mb.
 (4) Grey Salt Clay Mb.

ZEZ2S Z2 Sandstone Mb.
 (5) Red-brown Salt Clay Mb.
 ZEZ1M Z2 Middle Claystone Mb.
 (6) Z1 Fringe Carbonate Mb.
 ZEZ1G Z1 Lower Claystone Mb.
 (7) Fringe Copershale Mb.