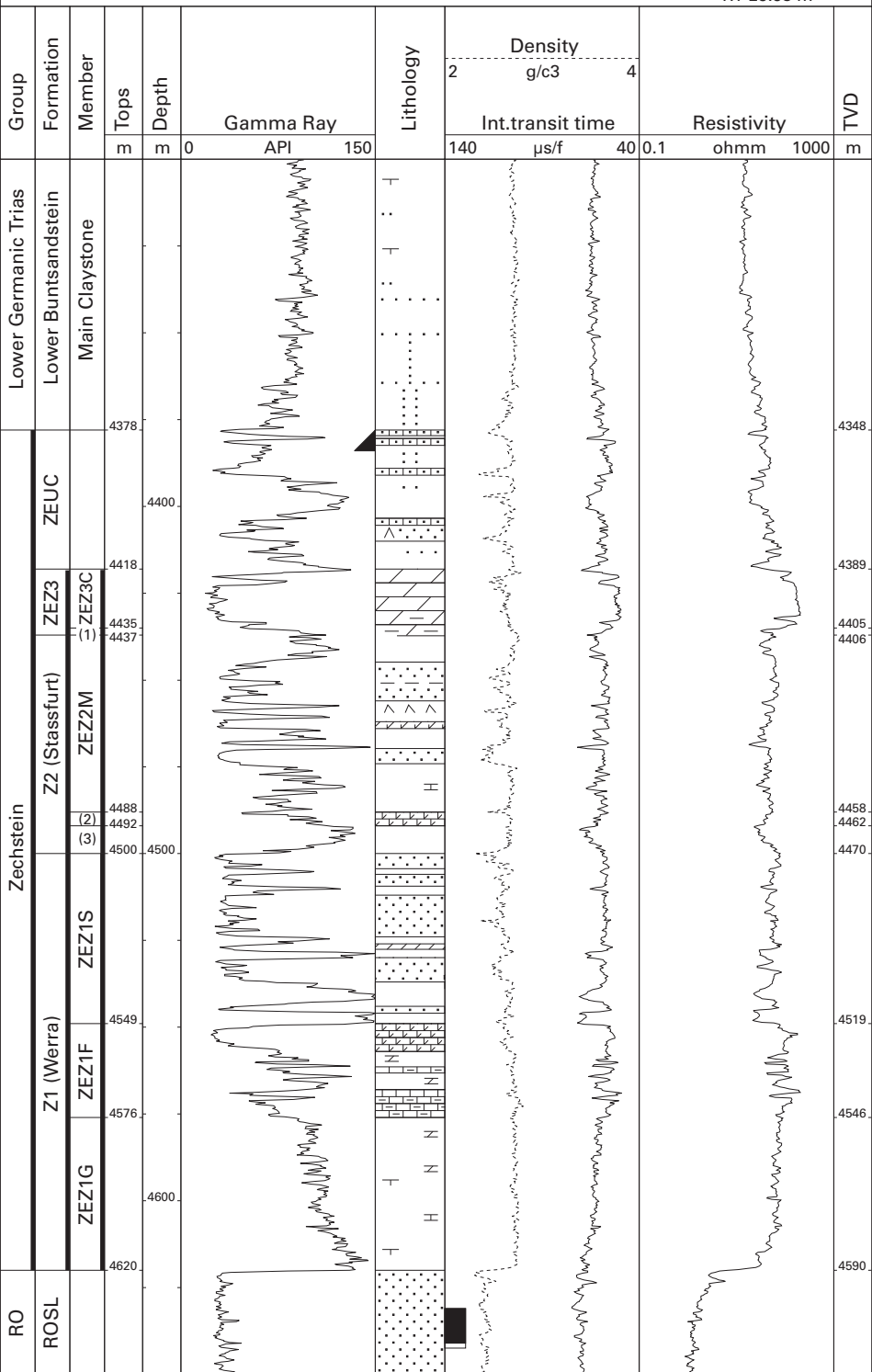


P09-01A (AMOCO)

52°32'19.40" N
03°44'52.20" E
RT 29.98 m



RO	Upper Rotliegend Gr.	ZEZ2M	Z2 Middle Claystone Mb.
ZEUC	Zechstein Upper Claystone Fm.	(2)	Z2 Carbonate Mb.
ZEZ3	Z3 (Leine) Fm.	(3)	Red-brown Salt Clay Mb.
ROSL	Slochteren Sandstone Fm.	ZEZ1S	Z1 Sandstone Mb.
ZEZ3C	Z3 Carbonate Mb.	ZEZ1F	Z1 Fringe Carbonate Mb.
(1)	Grey Salt Clay Mb.	ZEZ1G	Z1 Lower Claystone Mb.