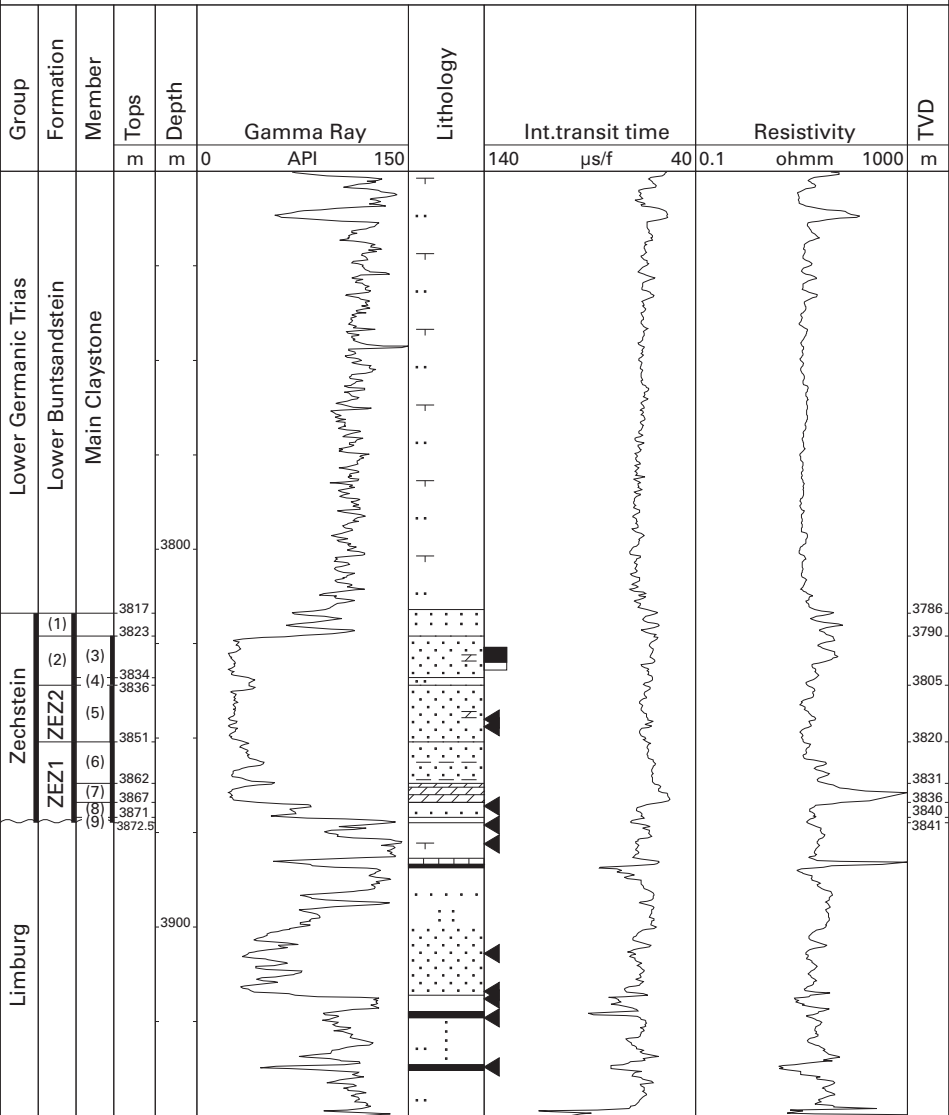


Q16-02 (BP)



- | | | | |
|------|-------------------------------|-----|-------------------------|
| (1) | Zechstein Upper Claystone Fm. | (5) | Z2 Sandstone Mb. |
| (2) | Z3 (Leine) Fm. | (6) | Z1 Sandstone Mb. |
| ZEZ2 | Z2 (Stassfurt) Fm. | (7) | Z1 Fringe Carbonate Mb. |
| ZEZ1 | Z1 (Werra) Fm. | (8) | Z1 Lower Claystone Mb. |
| (3) | Z3 Sandstone Mb. | (9) | Fringe Coppershale Mb. |
| (4) | Grey Salt Clay Mb. | | |

the sandstone members may be lumped into the informal Zechstein Fringe sandstone (ZEFRS)