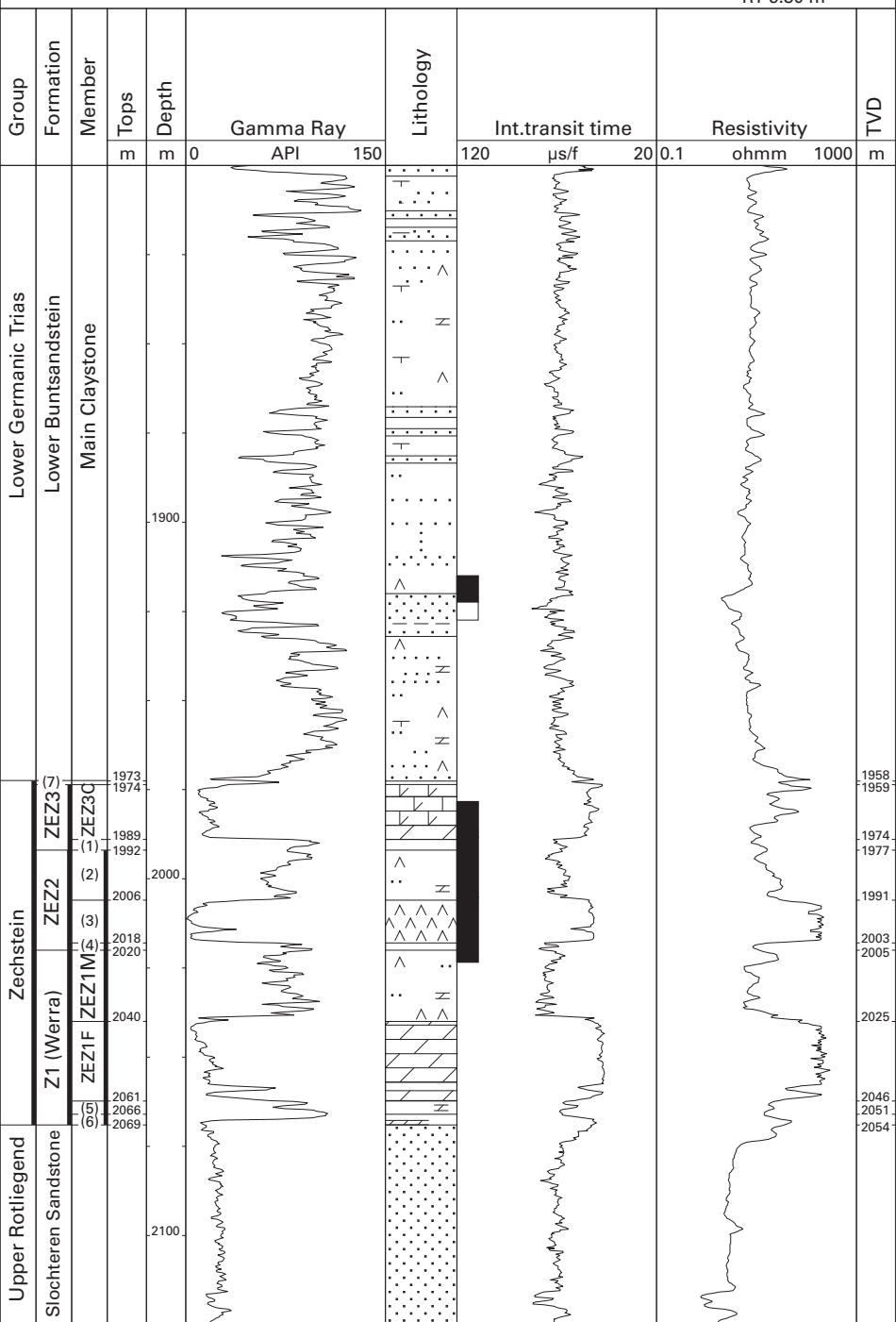


Buurmalsen-1 (NAM)

51°54'18.70" N
05°18'49.18" E
RT 9.30 m



(7) Zechstein Upper Claystone Fm.

ZEZ2 Z3 (Leine) Fm.

ZEZ2 Z2 (Stassfurt) Fm.

ZEZ3C Z3 Carbonate Mb.

(1) Grey Salt Clay Mb.

(2) Z2 Middle Claystone Mb.

(3) Z2 Fringe Anhydrite Mb.

(4) Red-brown Salt Clay Mb.

ZEZ1M Z1 Middle Claystone Mb.

ZEZ1F Z1 Fringe Carbonate Mb.

(5) Z1 Lower Claystone Mb.

(6) Fringe Coppershale Mb.