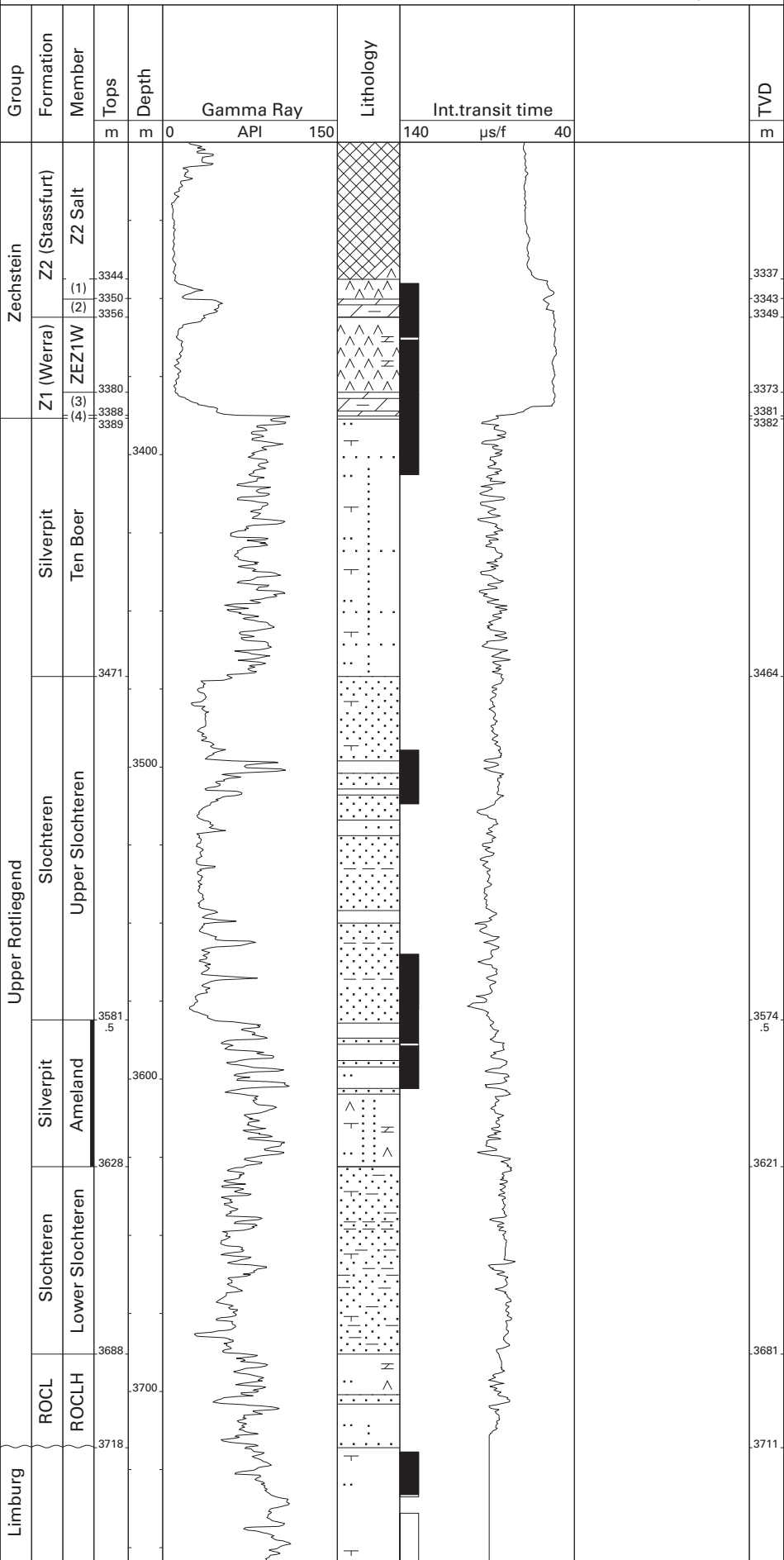


Buren-1 (BP)

53°27'25.40" N
05°48'29.59" E
RT 7.40 m



ROCL Silverpit Claystone Fm. (3) Z1 Carbonate Mb.
 (1) Z2 Basal Anhydrite Mb. (4) Coppershale Mb.
 (2) Z2 Carbonate Mb. ROCLH Hollum Mb.
 ZEZ1W Z1 Anhydrite Mb.