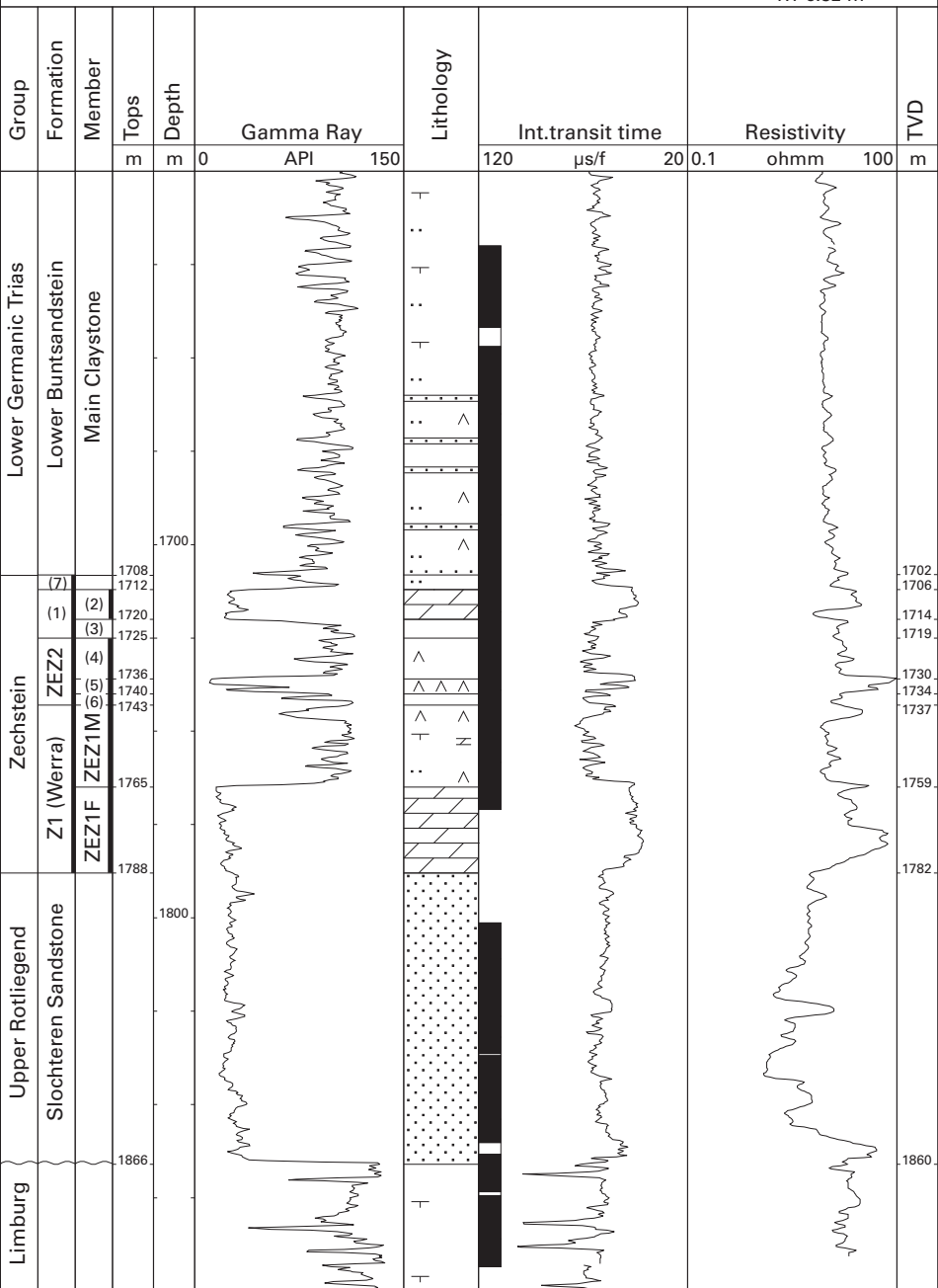


# Everdingen-1 (NAM)

51°57'34.60" N  
05°07'35.59" E  
RT 6.32 m



- (7) Zechstein Upper Claystone Fm.
- (1) Z3 (Leine) Fm.
- ZE22 Z2 (Stassfurt) Fm.
- (2) Z3 Carbonate Mb.
- (3) Grey Salt Clay Mb.

- (4) Z2 Middle Claystone Mb.
- (5) Z2 Fringe Anhydrite Mb.
- (6) Red-brown Salt Clay Mb.
- ZE21M Z1 Middle Claystone Mb.
- ZE21F Z1 Fringe Carbonate Mb.