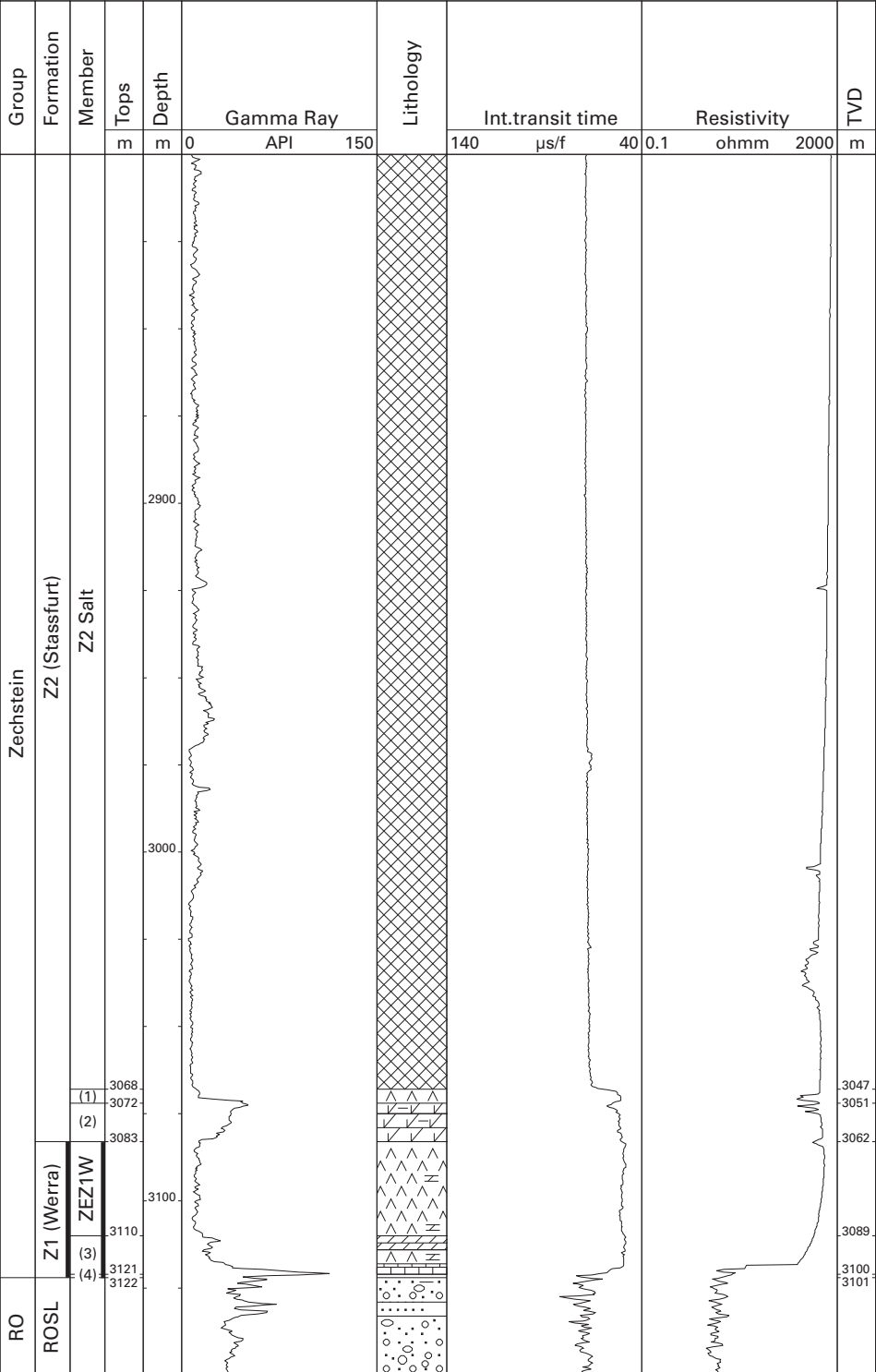


Vries-1 (NAM)

53°02'14.70" N
06°35'40.41" E
RT 18.87 m



RO	Upper Rotliegend Gr.	ZEZ1W	Z1 Anhydrite Mb.
ROSL	Slochteren Sandstone Fm.	(3)	Z1 Carbonate Mb.
(1)	Z2 Basal Anhydrite Mb.	(4)	Coppershale Mb.
(2)	Z2 Carbonate Mb.		